



ASTUTE LEADER

Mini Learning Modules

*Never in our lifetime has there
been a greater need for
outstanding leadership.*



Identity, Self-Leadership, and Change

Great leadership starts with self-awareness. This program helps leaders uncover their authentic leadership identity, align personal values with professional impact, and develop the resilience to navigate change. By exploring emotional intelligence, decision-making, and personal accountability, participants learn how to lead themselves before leading others. Self-leadership is the foundation of effective change leadership, empowering individuals to embrace uncertainty, manage complexity, and inspire those around them. Through interactive exercises and reflection, leaders will leave with a clear sense of purpose, a renewed commitment to growth, and the confidence to drive transformation in their teams and organisations.

Personal Brand Building



Your leadership brand is your reputation—how you are perceived, trusted, and remembered. In today's world, leaders must intentionally craft their professional identity to inspire, influence, and create impact. This program helps leaders define their personal brand, develop a compelling leadership narrative, and build credibility through effective communication. Learn how to leverage storytelling, social platforms, and thought leadership to enhance your visibility.

Whether you are an emerging leader or an established executive, this session equips you with the tools to differentiate yourself, align your leadership presence with your values, and ensure your brand reflects the leader you aspire to be.

Be the change you want to see



A New Style of Leader – 21st Century Fit

Leadership is evolving. The 21st century demands a new kind of leader—one who is adaptable, collaborative, and future-focused. Traditional command-and-control leadership no longer works in a world of complexity, digital transformation, and rapid change. This program introduces leaders to modern leadership principles, including agility, emotional intelligence, systems thinking, and digital fluency. Learn how to build resilient teams, foster innovation, and navigate ambiguity with confidence. Designed for forward-thinking professionals, this session will prepare you to lead effectively in today's dynamic environment and position yourself at the forefront of leadership excellence in an era of transformation.

Intentionality, Belief, and Choice

Great leaders don't succeed by accident—they lead with intention. This program explores the profound impact of intentionality, belief systems, and conscious decision-making in leadership. Learn how to align daily actions with long-term vision, develop a mindset of growth and possibility, and cultivate resilience in the face of uncertainty. Leaders will gain insights into how their beliefs shape their leadership style and the choices they make. Through practical frameworks, participants will leave equipped to make high-impact decisions, shape an empowered culture, and inspire those around them with a leadership approach grounded in clarity, confidence, and conviction.



Power, Influence, Enrollment, and Delegation



Leadership is about mobilising people, not controlling them. This program explores the art of ethical influence, power dynamics, and the psychology of persuasion. Learn how to gain buy-in, inspire action, and create alignment without relying on authority alone. Master the art of enrollment - engaging others in your vision and making them feel part of the journey. Discover the key to effective delegation, ensuring teams feel empowered rather than micromanaged. This session equips leaders with tools to harness their influence for impact, ensuring they lead with integrity, inspire trust, and foster high-performing teams that thrive on autonomy and collaboration.

Storying, Messaging, Language, and Culture



Words shape reality. The way leaders communicate defines their influence, shapes culture, and inspires action. This program teaches leaders the power of storytelling in leadership—how to craft messages that connect, engage, and drive change. Learn how to use language to build trust, shape organisational culture, and create alignment in times of transformation. Whether delivering a vision, managing a crisis, or inspiring teams, leaders must be intentional about their messaging. Through practical exercises, leaders will refine their communication style, master strategic storytelling, and develop a language that strengthens culture and aligns people with purpose.

Presence, Persuasion, and Partnership

Leadership isn't just about what you say - it's about how you show up. Presence is the silent force behind great leadership, shaping how others perceive and respond to you. This program equips leaders with the tools to command a room, build credibility, and develop strong partnerships. Learn the psychology of persuasion and how to influence effectively without manipulation.



Discover the art of collaboration, fostering relationships that drive success. Whether negotiating, presenting, or leading teams, this session ensures you bring confidence, clarity, and charisma to every interaction, positioning you as a leader people trust and follow.

Awareness and Reflection

Leadership is an ongoing journey of growth and adaptation. The most successful leaders invest in self-awareness—understanding their strengths, limitations, and impact on others. This program helps leaders develop a habit of reflection, allowing them to gain deeper insights into their leadership style and decision-making processes.



Learn how to seek and use feedback effectively, avoid blind spots, and cultivate a mindset of continuous improvement. With structured reflection techniques and practical exercises, leaders will leave with a roadmap for ongoing personal and professional growth, ensuring they lead with wisdom, authenticity, and a commitment to lifelong learning.

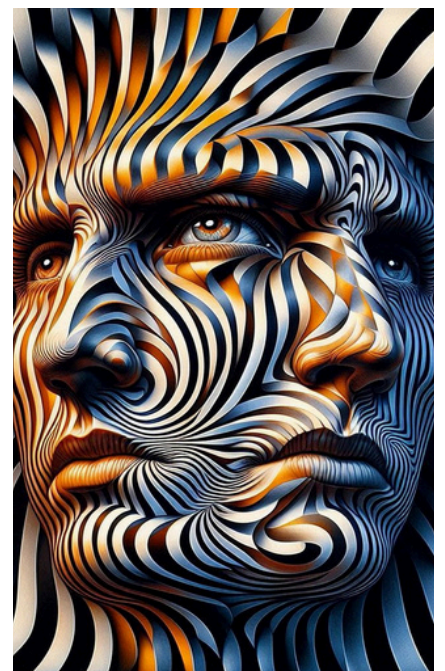
Cognitive Flexibility



In a fast-changing world, rigid thinking is a liability. Cognitive flexibility—the ability to shift perspectives, adapt to new information, and approach problems creatively—is a critical leadership skill. This program teaches leaders how to think beyond bias, embrace new ways of working, and develop an agile mindset. Learn how to navigate uncertainty, foster innovation, and approach decision-making with greater adaptability. Leaders will gain practical tools for breaking out of habitual thought patterns, developing mental agility, and leading teams through complexity with confidence and ease. Adaptability isn't optional—it's the foundation of modern leadership success.

Complexity, Paradox, and Sensemaking

Today's leaders face complex, interconnected challenges with no clear answers. Success requires the ability to embrace paradox, hold multiple perspectives, and make sense of uncertainty. This program equips leaders with tools to navigate complexity, identify patterns in chaos, and lead with clarity despite ambiguity. Learn how to manage competing priorities, balance short-term demands with long-term vision, and turn uncertainty into opportunity. By mastering sensemaking, leaders can guide their teams with confidence, ensuring they stay grounded, strategic, and effective in a world that demands adaptability and insight.



ARE YOU READY TO DEVELOP ASTUTE LEADERS?



If you are looking to elevate the ability of your teams to lead in today's challenging business environment, the Astute Leader Mini Learning Modules are a great place to start. By partnering with us, your leaders will gain the tools to align professional brand with organisational goals, building a culture of adaptive and resilient leadership. This experience will not only enhance their effectiveness in their current role but also empower them to contribute powerfully to meaningful and lasting change within your organisation.

Supported by the Engagement Dynamics team, participants will explore new ways of BEING leaders, through participative and reflective exercises, self-directed learning activities, peer feedback and action learning assignments, ensuring they can apply these cutting edge principles. These mini learning modules are designed to help organisational employees become Astute Leaders, ready to thrive in today's complex business landscape.

Included in the programmes are:



- Assessments to deepen insight and to measure progress and impact
- Foundational content and reflective pre-work.
- Experiential, reflective, theoretical, and experimental workshop activities.
- Signature games and gameful activities
- Action-learning assignments.
- Recommended readings and books.
- Access to Astute Leader Network members and activities.

Transform your organisation's leadership capabilities with the Astute Leadership Development Ecosystem and join other 21st century leaders already driving impactful change.

